

IBM WebSphere Adapter for SAP Software
on
WebSphere Application Server V7.0.0.7
Installation Guide

This edition applies to version 7.0.0.0, release 1, and modification 0 of IBM WebSphere Adapter for SAP Software on WebSphere Application Server (product number 5724-T72) and to all subsequent releases and modifications until otherwise indicated in new editions. To send us your comments about this document, mail to://doc-comments@us.ibm.com. We look forward to hearing from you. When you send information to IBM, you grant IBM a nonexclusive right to use or distribute the information in any way it believes appropriate without incurring any obligation to you. © **Copyright International Business Machines Corporation 2009**. All rights reserved. US Government Users Restricted Rights – Use, duplication or disclosure restricted by GSA ADP Schedule Contract with IBM Corp.

Installing

This document describes how to install and uninstall IBM® WebSphere® Adapter for SAP Software on WebSphere Application Server V7.0.0.7 releases.

After you install the adapter using the instructions in this guide, refer to your adapter documentation for information about how to configure and deploy it.

Supported platforms for running the installer

The installer supports a variety of Microsoft® Windows® and UNIX® and Linux® platforms.

- Windows
 - Windows XP
 - Windows 2003 Standard Edition
 - Windows 2003 Enterprise Edition
- UNIX and Linux
 - AIX®
 - HP UNIX 11x
 - HP UNIX IA64
 - Solaris SPARC
 - Solaris x86
 - Red Hat Enterprise AS/ES/WS
 - SuSE Enterprise Server

Note: Install the adapter on workstations with the preceding operating systems only. Not all adapters can be installed on all operating systems, even though they might run on those operating systems. For more information, see the documentation specific to your adapter.

For information about adapter-specific hardware and software requirements see <http://www.ibm.com/support/docview.wss?uid=swg27006249>.

Installing the adapter using a graphical user interface

The installer places a resource adapter archive (RAR) file and other adapter artifacts for WebSphere Adapter for SAP Software on your system. However, the installer does not deploy or configure this adapter.

Performing the installation

You can install the adapter from either the IBM WebSphere Adapter for SAP Software on WebSphere Application Server, V7.0.0.7 product CD or download image.

1. Insert the IBM WebSphere Adapters V7.0.0.0 product CD, or access the download image.
2. Read the sap70_qsg_xx.pdf file on the IBM WebSphere Adapter V7.0.0.0 product CD in the language you desire, for SAP Software, or download the image. This file might contain installation information that was created after this edition of *Installing IBM WebSphere Adapters* was published.
3. Start the installer by running the executable files specific to your operating system:
 - **Windows:**
 - setupwin32.exe
 - setupwinAMD64.exe
 - setupwinIA64.exe
 - **UNIX and Linux:**
 - setupaix
 - setupHP.bin
 - setupHPIA64.bin
 - setupLinux.bin
 - setupSolaris.bin
 - setupSolarisx86.bin

Note: Java™ runtime is required to run the installer. The installer will attempt to detect the installation directory of the WebSphere Application Server JRE first, and then look for the System JRE on the installation system. If neither is available, the installer will allow you to select JRE manually.

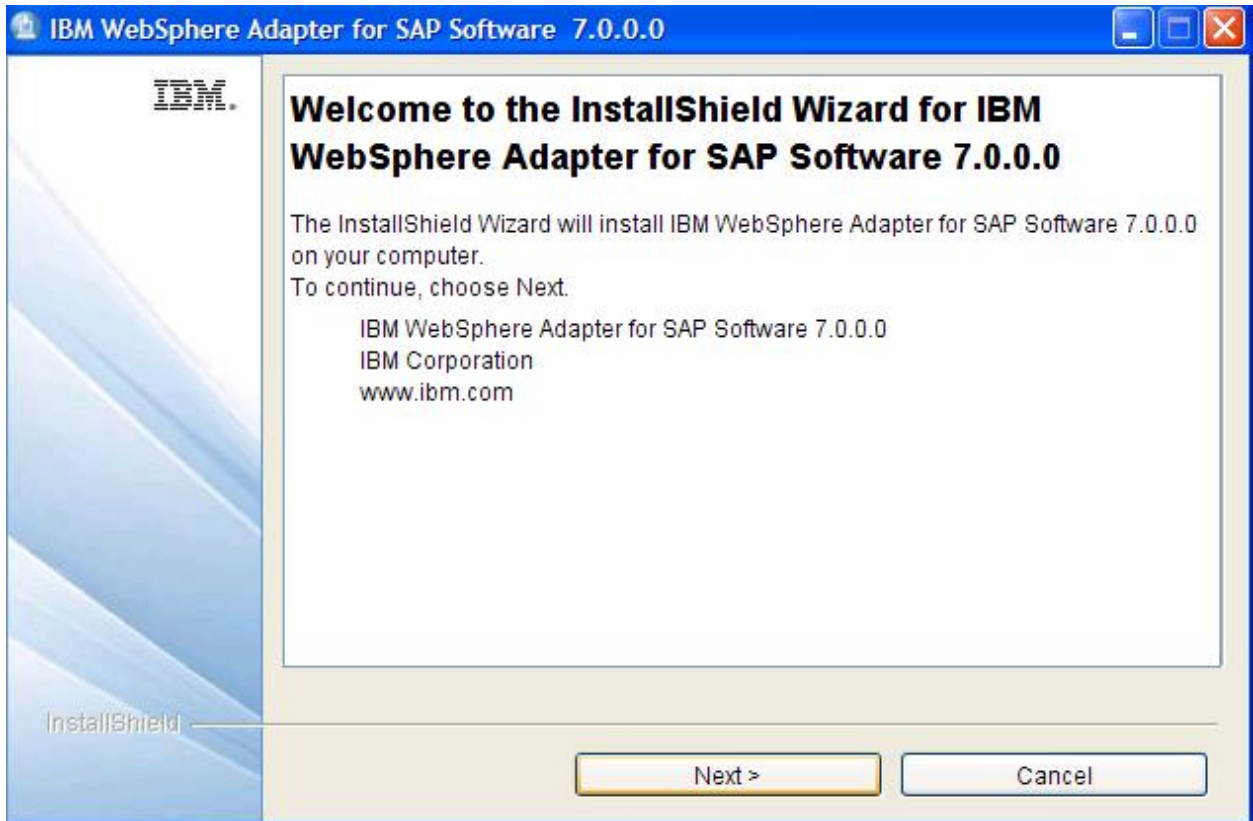


4. Select the language for the installer from the languages list and click **OK**. **Note:** In this step, select the language in which the installer is displayed, not the language for the adapter you are installing.

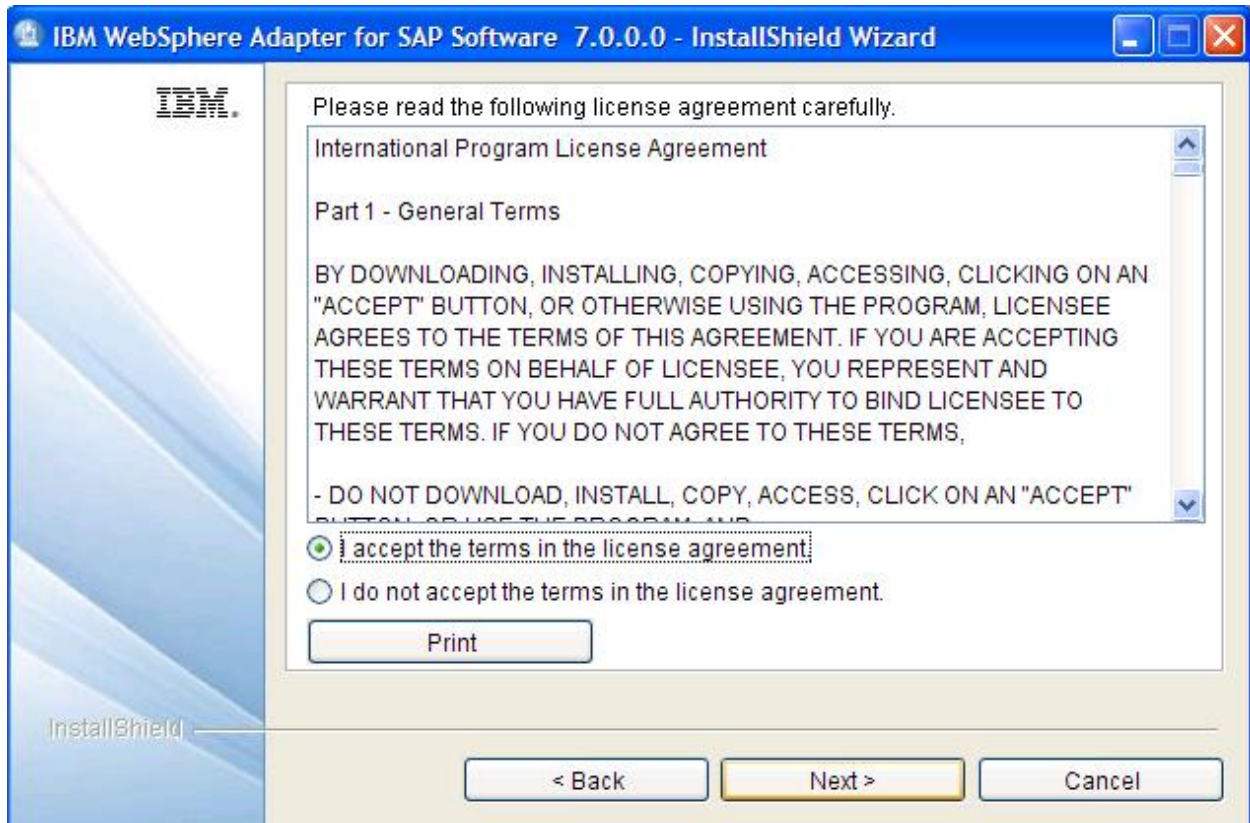
The installation launch screen of the Adapter for SAP Software on WebSphere Application Server appears.



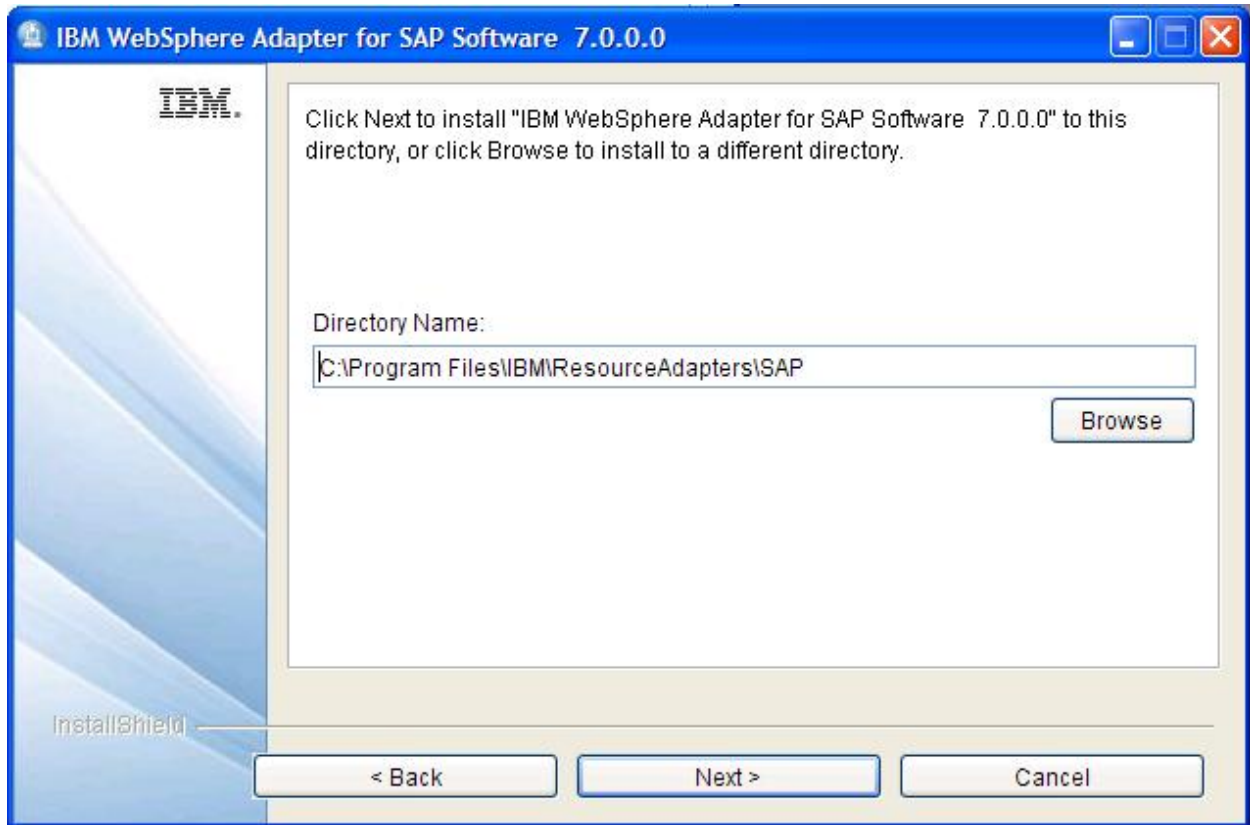
5. On the Welcome window, click **Next**.



6. Read and accept the license agreement and click **Next**.

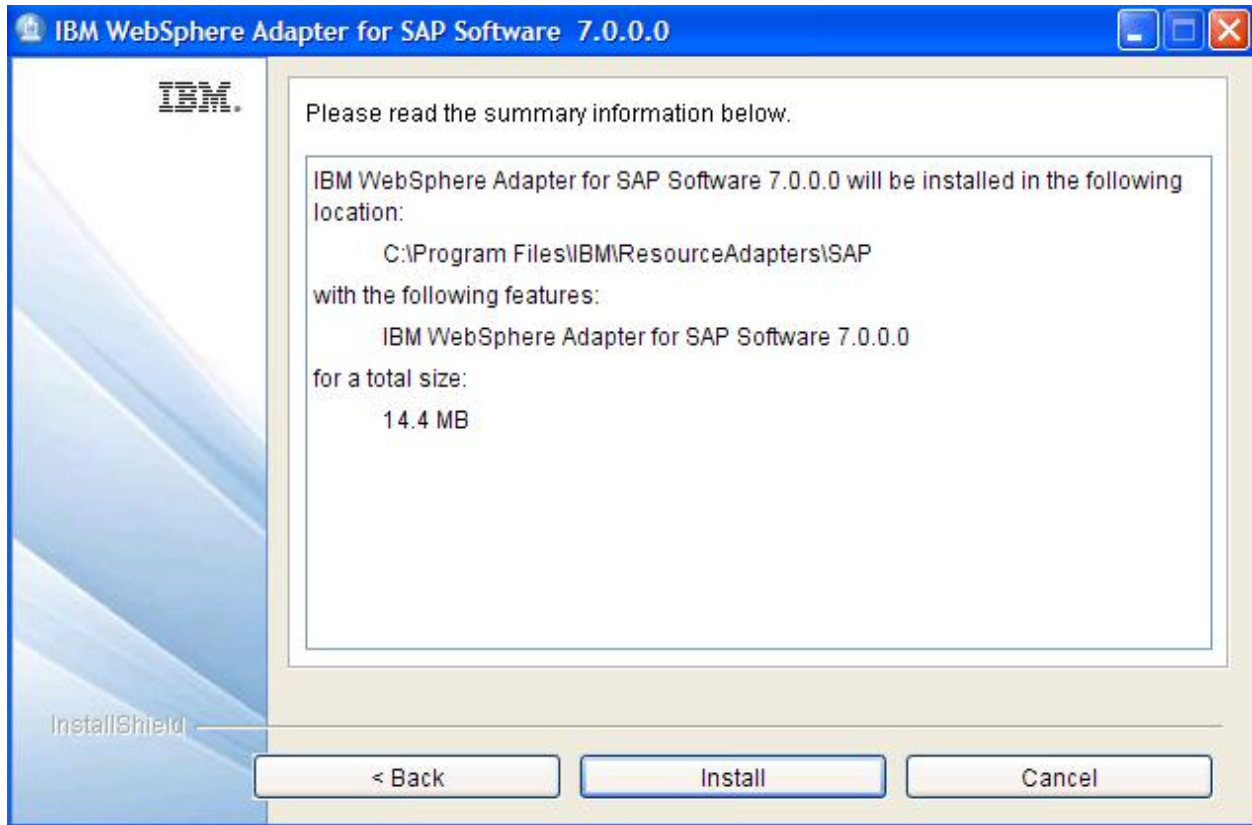


7. Either accept the default installation path or specify a new one, and click **Next**.



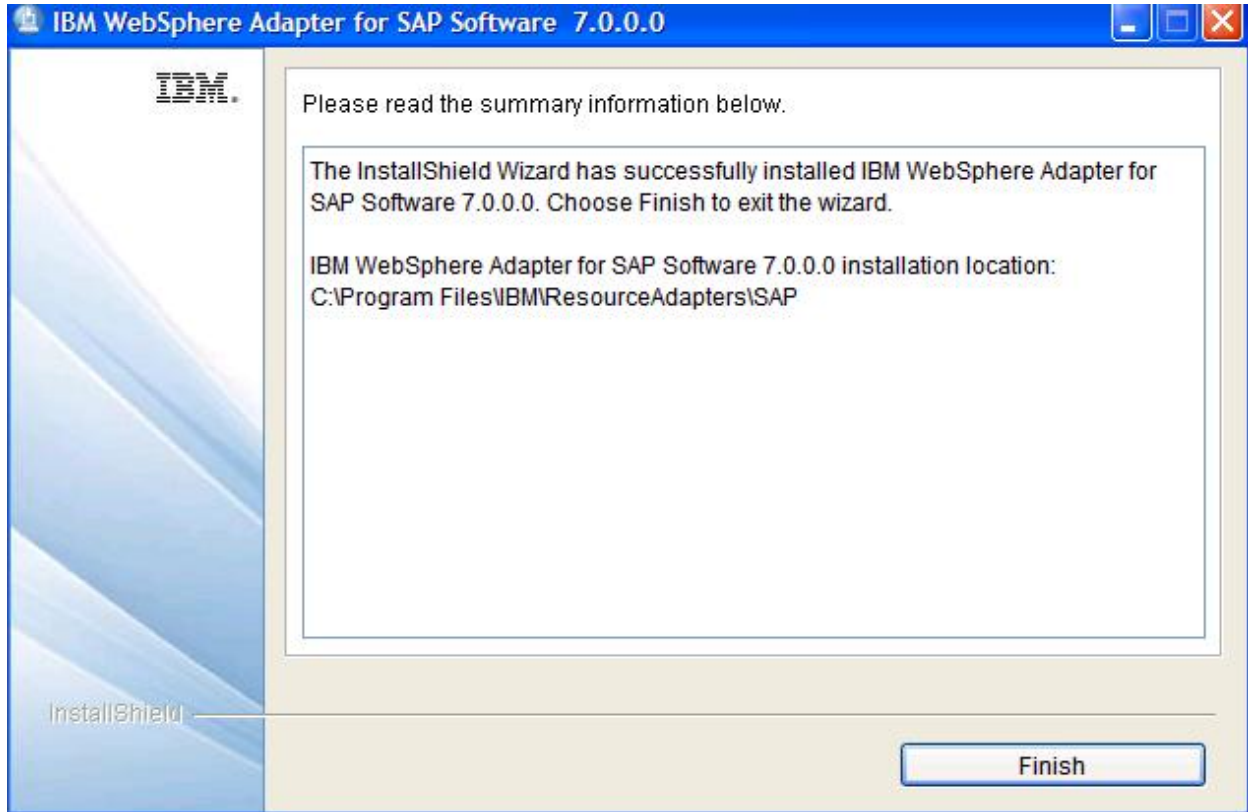
The summary presented in the next window lists the product name, version, installation location, components to be installed, and disk space required by the installation. Confirm the summary information and

8. Click **Install**.



The installer installs the RAR file, an uninstaller, and other adapter artifacts, such as message files, and then displays a confirmation window.

9. Click **Finish**.



Result

Verify that the installation was successful by checking for the RAR file in the destination directory. You can also check the return code in the installation log file.

For more information about return codes and the log file, or for support information, see the "Troubleshooting an installation" section.

Troubleshooting an installation

If you experience problems while installing an IBM WebSphere Adapter for SAP Software on WebSphere Application Server, you can turn to a variety of resources, including the installation log file, which contains error and informational messages, and to IBM Software Support.

Installation log file

The installation log file, log.txt, is located in the installation location directory, for example:

C:\Program Files\IBM\ResourceAdapters\SAP

The log.txt file collects status reports and error and informational message IDs. These reports and messages are cumulative and time stamped.

As this table shows, error message IDs end with an E, and informational message IDs end with an I.

Message ID	What it means
CWYAS0001I	The installation was successful.
CWYAS0002E	The installation failed.
CWYAS0003I	The uninstallation was successful.
CWYAS0004E	The uninstallation failed.

The message IDs appear on lines that end with return codes. A return code of 0 means a successful operation. A non-zero return code indicates an installation or uninstallation failure.

For example, the following line is from the log.txt file that accompanies a successful installation of WebSphere Adapter for SAP Software:

```
Install, com.ibm.wbia.ismp.wizard.actions.LogInstallationStatus, msg1,  
CWYAS0001I: IBM WebSphere Adapter for SAP Software 7.0.0.0 successfully  
installed. Return code: 0
```

Self help resources

Use the self help resources of IBM Software Support to get the most current support information, to obtain technical documentation, to download support tools and fixes, and to prevent problems with WebSphere Adapters. The self help resources also help you diagnose problems with the adapter and contact IBM Software Support.

The software support Web site for WebSphere Adapters at <http://www.ibm.com/software/integration/wbiadapters/support> provides the following resources:

- Flashes (alerts from technical support)
- Technotes
- Authorized program analysis reports (APARS)
- Technical information, including the product information center, manuals, IBM Redbooks®, and whitepapers.
- Educational offerings
- *IBM Software Support Handbook*

Register at the site to use My Support to create a customized support page for your use.

Uninstalling this Adapter

When uninstalling a WebSphere Adapter, you remove the RAR file and other files placed on your system by the installer, except for the log.txt file and the installation directory. You can use a graphical uninstaller or a script. Uninstalling a RAR file has no effect on an adapter RAR or EAR file deployed to WebSphere Application Server.

Uninstalling an adapter using a graphical user interface

Use the uninstaller, which is installed with the adapter, when you want to use a graphical user interface to uninstall this adapter. To use the uninstaller, the adapter must be successfully installed.

1. Launch the uninstaller:
 - o On Windows, follow these steps:
 - a. Click **Start > Settings > Control Panel**.
 - b. Choose **Add/Remove Programs**.
 - c. Click **IBM WebSphere Adapter for <your adapter>**.
 - d. Click **Change/Remove**.

Note: Alternatively, you can launch the uninstaller from the command line:

```
<install location>\_uninst\uninstaller.exe
```

- o On Linux or UNIX, enter the command:

```
<install location>/_uninst/uninstaller.bin
```

2. Select the language for the uninstaller from the languages list, and click **OK**.
3. Confirm the adapter you want to uninstall, and click **Next**.
4. Read the summary information to confirm the adapter and its file path, and click **Next**.
5. When the uninstaller is finished, click **Finish**.

Accessibility

The installer and the installation wizard support the assistive technology features outlined in the IBM Java Accessibility checklist. Keyboard shortcuts allow navigation and selection of graphical user interface components without use of a mouse.

For more information about accessibility, see the IBM Java Accessibility Web site at <http://www-306.ibm.com/able/guidelines/java/accessjava.html>.

All operating system keyboard accessibility features are maintained. The keyboard shortcuts are as follows:

- Navigate among graphical components by using the Tab key.
- Select a button within a component by using the Space bar or Enter key, then use Enter as needed to choose the selected item.
- Cancel the installation or uninstallation action by tabbing to the Cancel key and then either using Alt + C or the Enter key.

When working with the installer, use the Space bar to accept the license (by selecting the radio button), then use the Enter key to proceed to the next screen.

The assistive technology features include the following:

- **Focus.** Assistive technology readers read the object in focus. The installer and the installation wizard feature visual indicators, including highlighted objects and a visual cursor and movement.
- **Non use of color.** Color is not used to provide status or information.
- **Contrast.** The installer and the installation wizard inherit system contrast settings. System contrast settings are configurable.
- **Support system settings.** Settings for size, font, and color for all user interface controls are inherited from the operating system.
- **Non-animated presentation mode.** The installer incorporates animation for the installation and uninstallation progress display only. Assistive technology readers announce the installation and uninstallation actions and read the progress of these processes as percentages completed.
- **Controls, objects, and icon labels.** All the installer and installation wizard components are named and a description for each is provided.

No icons are used. Labels are associated with components, and are detected and read by assistive technology readers.

Notices

This information was developed for products and services offered in the U.S.A.

IBM may not offer the products, services, or features discussed in this document in other countries. Consult your local IBM representative for information on the products and services currently available in your area. Any reference to an IBM product, program, or service is not intended to state or imply that only that IBM product, program, or service may be used. Any functionally equivalent product, program, or service that does not infringe any IBM intellectual property right may be used instead. However, it is the user's responsibility to evaluate and verify the operation of any non-IBM product, program, or service.

IBM may have patents or pending patent applications covering subject matter described in this document. The furnishing of this document does not grant you any license to these patents. You can send license inquiries, in writing, to:

IBM Director of Licensing
IBM Corporation North Castle Drive
Armonk, NY 10504-1785
U.S.A.

For license inquiries regarding double-byte (DBCS) information, contact the IBM Intellectual Property Department in your country or send inquiries, in writing, to:

IBM World Trade Asia Corporation
Licensing 2-31 Roppongi 3-chome, Minato-ku
Tokyo 106-0032, Japan

The following paragraph does not apply to the United Kingdom or any other country where such provisions are inconsistent with local law:

INTERNATIONAL BUSINESS MACHINES CORPORATION PROVIDES THIS PUBLICATION "AS IS" WITHOUT WARRANTY OF ANY KIND, EITHER EXPRESS OR IMPLIED, INCLUDING, BUT NOT LIMITED TO, THE IMPLIED WARRANTIES OF NON-INFRINGEMENT, MERCHANTABILITY OR FITNESS FOR A PARTICULAR PURPOSE. Some states do not allow disclaimer of express or implied warranties in certain transactions, therefore, this statement may not apply to you.

This information could include technical inaccuracies or typographical errors. Changes are periodically made to the information herein; these changes will be incorporated in new editions of the publication. IBM may make improvements and/or changes in the product(s) and/or the program(s) described in this publication at any time without notice.

Any references in this information to non-IBM Web sites are provided for convenience only and do not in any manner serve as an endorsement of those Web sites. The materials at those Web sites are not part of the materials for this IBM product and use of those Web sites is at your own

risk. IBM may use or distribute any of the information you supply in any way it believes appropriate without incurring any obligation to you.

Licensees of this program who wish to have information about it for the purpose of enabling: (i) the exchange of information between independently created programs and other programs (including this one) and (ii) the mutual use of the information which has been exchanged, should contact:

IBM Corporation
Software Interoperability Coordinator, Department 49XA
3605 Highway 52 N
Rochester, MN 55901
U.S.A.

Such information may be available, subject to appropriate terms and conditions, including in some cases, payment of a fee.

The licensed program described in this information and all licensed material available for it are provided by IBM under terms of the IBM Customer Agreement, IBM International Program License Agreement, or any equivalent agreement between us.

Information concerning non-IBM products was obtained from the suppliers of those products, their published announcements or other publicly available sources. IBM has not tested those products and cannot confirm the accuracy of performance, compatibility or any other claims related to non-IBM products. Questions on the capabilities of non-IBM products should be addressed to the suppliers of those products.

This information contains examples of data and reports used in daily business operations. To illustrate them as completely as possible, the examples include the names of individuals, companies, brands, and products. All of these names are fictitious and any similarity to the names and addresses used by an actual business enterprise is entirely coincidental.

COPYRIGHT LICENSE:

This information contains sample application programs in source language, which illustrate programming techniques on various operating platforms. You may copy, modify, and distribute these sample programs in any form without payment to IBM, for the purposes of developing, using, marketing or distributing application programs conforming to the application programming interface for the operating platform for which the sample programs are written. These examples have not been thoroughly tested under all conditions. IBM, therefore, cannot guarantee or imply reliability, serviceability, or function of these programs.

Programming interface information

Programming interface information, if provided, is intended to help you create application software using this program.

General-use programming interfaces allow you to write application software that obtain the services of this program's tools.

However, this information may also contain diagnosis, modification, and tuning information. Diagnosis, modification and tuning information is provided to help you debug your application software.

Warning: Do not use this diagnosis, modification, and tuning information as a programming interface because it is subject to change.

Trademarks

IBM and related trademarks: <http://www.ibm.com/legal/copytrade.shtml>

Other company, product, or service names may be trademarks or service marks of others.

This product includes software developed by the Eclipse Project (<http://www.eclipse.org>).